

PRODUCT INFORMATION

TSAL

Emergency Handle
for Railway Applications



Dimension diagram

The TSAL electric emergency handle family enables the passenger to switch an emergency signal, which can be used to trigger an emergency stop, warn the train driver of danger, etc.

Its basic functionality makes it easy to integrate in any project, retaining the reliability of the emergency signal triggering and reset function.

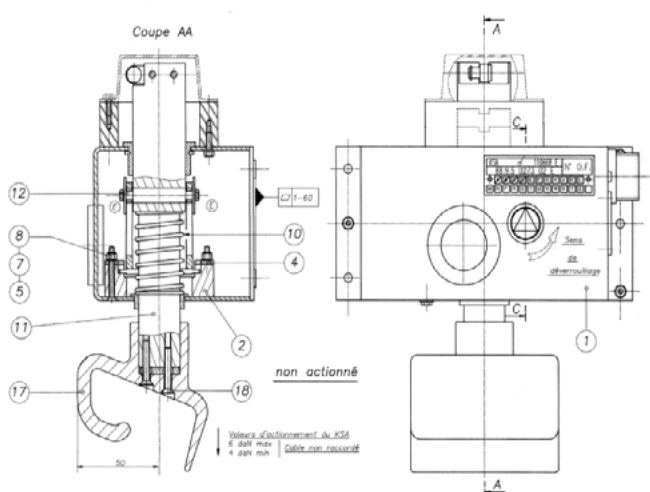
Features:

- High-quality switching elements
- Positive opening operation
- Self-cleaning contacts
- High shock and vibration resistance
- Guaranteed years of uninterrupted operation

Applications:

- Rail vehicles in local and long-distance traffic
- Escalators and passenger conveyors
- Industrial applications

Specifications



Dimensions in mm

Series	TSAL
Mechanical endurance	> 1,000 operations
IP rating	up to IP67 (EN 60529)
Shock/Vibration	EN 61373, EN 60068
Housing material	Upon request
Actuating force	Upon request
Ambient air temperature range T_u	$-40^{\circ}\text{C} \dots +70^{\circ}\text{C}$
Switching element	Snap-action switches S826 and S970 series
Contact configuration	NO + NC
Contact material	Silver (Ag90Ni10) Gold (AuNi3Ag26)
Conventional thermal current I_{th}	10 A (S826), 3 A (S870) at $T_u = 85^{\circ}\text{C}$
Rated insulation voltage U_i	250 V