

S100/80

Single pole emergency disconnect switches for industrial trucks



Schaltbau S100 series emergency disconnect switches guarantee instantaneous cut-out by manual operation.

Load circuits are closed by pulling the red knob and, in an emergency, forcibly ruptured by pushing it down. Once actuated, the spring-loaded snap mechanism of the switch will complete the switch off procedure in any case. For ON and OFF there are two maintained positions.

Special feature: The knob can be used as key. When engaged to the OFF position it can be removed so as to prevent unauthorized use of the truck.

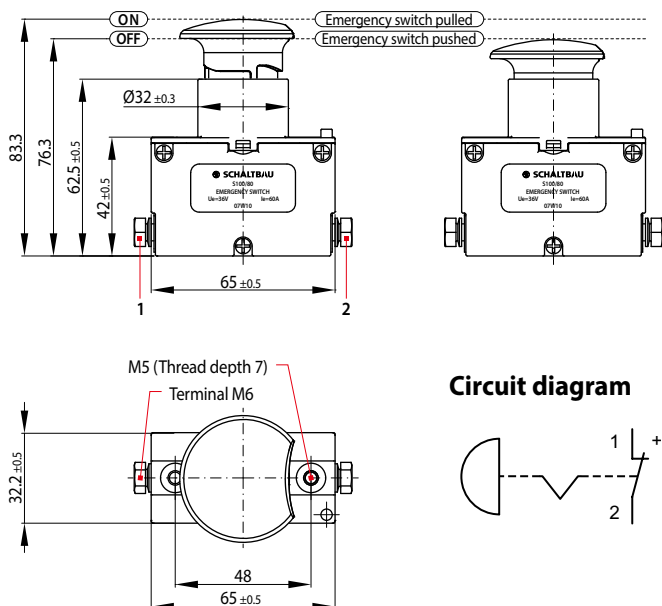
Features:

- Single pole emergency disconnect switch with snap mechanism
- Key function: Knob removable in OFF position
- Maintained position for ON and OFF
- High resistance to shock and vibration
- Optional auxiliary switch

Application:

Especially designed for industrial trucks such as powered pallet jacks and walkie-stackers

Dimension diagram



Circuit diagram



Dimensions in mm

Specifications

Kind of voltage	DC
Main contacts, configuration, # of	1x NC
Nominal voltage U_n	24 V / 36 V / 48 V
Rated insulation voltage U_i	150 V
Rated impulse withstand voltage U_{imp}	2.5 kV
Pollution degree	PD3
Overvoltage category	OV3
Rated operating current I_e (70 % duty cycle, duration 60 s)	80 A
Conventional thermal current I_{th}	60 A
Blowout magnets	no, bi-directional
Main contacts, material/terminal	AgSnO ₂ / M6
Auxiliary contact	1x SPDT S880, optional
Mechanical/electrical endurance $U_e = 36 V; I_e = 60 A; T < 1 ms$	> 100,000 operating cycles
Degree of protection	IP44 above mounting plate IP30 below mounting plate IP00 terminals
Mounting position	vertical
Weight	165 g
Standards	EN 1175-1 (IEC 60947-5-1, IEC 60947-5-5)



Find your worldwide contact person. We are here for you, personally!

Schaltbau GmbH
 contact@schaltbau.de
 www.schaltbau.com

We reserve the right to make technical alterations without prior notice. For updated product information visit www.schaltbau.com

Flyer, PDF only S1936/2311/0